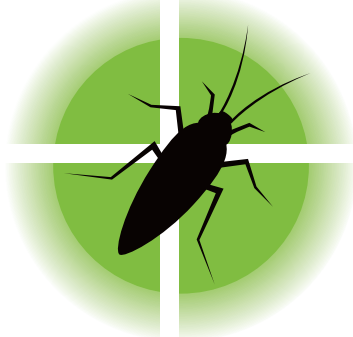


TyraTech  
**NATURALS™**  
**TechDust™**  
**Natural Dust Insecticide**



- Kills and Controls Ants, Cockroaches and More
- For Residential, Commercial and Industrial Use



Keep Out of the Reach of Children  
**CAUTION**

See side panel for additional precautionary statements.

NET WEIGHT: 10 lbs.

**Active Ingredient:**

Thyme Oil [8007-46-3] .....4.1%  
 Other Ingredients\* .....95.9%  
 Total .....100.0%

\*Calcium silicate, sodium bicarbonate, calcium carbonate, isopropyl myristate, wintergreen oil.

This product has not been registered by the United States Environmental Protection Agency. TyraTech, Inc. represents that this product qualifies for exemption from registration under the Federal Insecticide, Fungicide, and Rodenticide Act.

**For the control of Cockroaches, Ants, Spiders, and other Crawling Pests.**

**WHERE TO USE**

TechDust™ may be applied with a hand or power duster. Dust may be injected into areas where insects tunnel or nest. To be used in and around residential and commercial/industrial structures such as in homes, hotels, hospitals, multi-family housing, schools, nursing homes, offices, restaurants, kitchens, laboratories, factories, slaughter-houses, production facilities, modes of transport (not to include airplane cockpits), garages, storage units and other areas of human habitation or activity.

FIRST AID	
<b>If In Eyes</b>	Hold eye open and rinse slowly and gently with water for 15-20 minutes. Remove contact lenses if present, after the first 5 minutes, then continue rinsing eye.
<b>If On Skin</b>	Wash thoroughly with soap and water.
<b>If Inhaled</b>	Move affected person(s) to fresh air.
<b>If Ingested</b>	Rinse mouth out with water and contact a doctor for treatment advice.
If irritation develops, contact a doctor for treatment advice. Have the product label or container with you when calling a doctor or going for treatment.	

**PRECAUTIONARY STATEMENTS**

**HAZARDS TO HUMANS AND DOMESTIC ANIMALS**

With direct contact, causes moderate eye irritation. Avoid contact with eyes, skin, clothing and plants. Product is not intended for use on animals. During prolonged exposure to dust, use of a NIOSH approved respirator is recommended. Avoid direct contact with bodies of water, to include aquariums and ornamental ponds.

**DIRECTIONS FOR USE**

Read entire label prior to use and use product as directed.

Apply TechDust uniformly at the rate of 1 to 4 ounces per 100 ft<sup>2</sup>. For heavy infestations or for use on spiders or larger insects such as American cockroaches, the 4 ounce rate is recommended. Store sealed product in a dry area between uses.

**FOR INDOOR USE:** Apply TechDust to cracks, crevices and wall voids for insect control and to prevent ants and cockroaches from forming nest areas or congregating. May also be applied to other areas where insects are hiding or harboring: behind backsplashes, baseboards, under tack strips, edges of linoleum or carpet, under appliances, counters, window ledges, behind and under furniture, in closets, garages, attics, bathrooms, basements and crawl spaces. **Prior to use, test a small inconspicuous area to check for possible staining. Not intended for use on animals.**

**Cockroaches:** Apply to voids where cockroaches may be harboring. TechDust will kill those cockroaches that are directly contacted and those that enter the area after application.

**Ants:** Contact kill only. Apply directly to ant trails or to nesting sites.

**Food Areas and Food Handling:** Apply product directly into tunnels and voids in areas away from food or food preparation areas such as walls, floorboards, under and around appliances, waste disposal areas and any other area where insects may be hiding or harboring. Prior to product application, cover or remove food items. Avoid direct contact with food or food preparation areas.

**FOR OUTDOOR USE:** For control of crawling pests that enter structures from outdoor areas, apply along edges of patios, cracks or expansion joints in or along foundations or pavement, driveways, porches, doorways (to include French and sliding glass doors), window sills and weep holes. Dust may also be applied in those areas where pests harbor around the structure to include under doormats, under and around potted plants, patio furniture, columns, eaves and soffits. For outdoor use, apply dust at a rate of 1 to 4 ounces per 100 ft<sup>2</sup>. For best results, apply dust directly to insects. Re-apply as needed or if dust becomes wet. Applications should be made so that direct contact with bodies of water (to include aquariums or ornamental ponds), or contact resulting from run-off does not occur.

**STORAGE AND DISPOSAL**

For best results, store in sealed container at room temperature in a dry area away from heat or open flame. Any unused product must be disposed of on site or at an approved waste disposal facility. Do not reuse this container. When container is empty, recycle if available or dispose in trash.



TyraTech, TyraTech Naturals, and Nature's Technology are registered trademarks of TyraTech, Inc.

1901 S. Harbor City Blvd., Melbourne, FL 32901  
 1 (866) 951-2847 www.TyraTech.com