



Maxforce[®] FC

TEAR HERE TO OPEN 

ANT BAIT STATIONS

PRECAUTIONARY STATEMENTS HAZARDS TO HUMANS AND DOMESTIC ANIMALS CAUTION

Wash thoroughly with soap and water after handling bait stations.

PRODUCT INFORMATION

MAXFORCE[®] FC Ant Bait Stations contain an attractive bait formulation which kills Pharaoh ants and other common household ants: Argentine Ants, Crazy Ants, Pavement Ants, Cornfield Ants, Odorous House Ants, Acrobat Ants and Thief Ants by contact and ingestion. When properly used, MAXFORCE FC Ant Bait Stations will attract foraging worker ants that feed on the bait, which contains the active ingredient Fipronil. Then, the worker ants will take some of this bait back to the nest, where they will pass it on to destroy the queen and the entire colony. This is called the Maxforce Domino Effect[®].

Do not use residual sprays near the product, as the worker ants must remain alive to carry the bait back to the queen and immature workers. Residual sprays may cause worker ants to spread out and form secondary colonies. MAXFORCE FC Ant Bait Stations works because it is non-repellent and thus will not cause secondary colony formation.

MAXFORCE FC Ant Bait Stations have no insecticide odor, are child-resistant and easy to use. The bait station design allows you to inspect each bait placement and monitor the amount of ant feeding. They may be used for the control of ants in hospitals, nursing homes, day care centers, schools, residential establishments, warehousing and commercial establishments, food service, food manufacturing and food processing facilities, laboratories, computer and electronic equipment facilities, pet shops, zoos, buses, boats, aircraft, and trains.

DIRECTIONS FOR USE

It is a violation of Federal law to use this product in a manner inconsistent with its labeling.

- Simply place each bait station indoors or outdoors (adjacent to the home or structure) immediately next to ant trails or close to areas where ants are numerous. Nests are usually located in dark, humid and warm areas close to a water and food source. For maximum effectiveness in ant control the bait station should be placed in or near wall voids, electrical outlets (if wiring permits), potted plants, waste-paper baskets, garbage cans, and sinks. Bait stations can be placed in cabinets, next to dishes, near sensitive equipment or in any place specifically listed on this label. In zoos and pet shops, place bait stations out of reach of zoo animals and pets.
- Indoor Use: For normal infestations, you should use 3 MAXFORCE FC Ant Bait Stations in an average size room. For heavier infestations, you will need additional bait stations in each room. If infestation persists beyond two weeks, replace all bait stations where the bait has been completely consumed and relocate bait stations that show no evidence of ant feeding.
- Outdoor Use: Bait stations should be placed adjacent to the home or structure near ant activity or anywhere ants may gain access to the home or structure. Application sites include electrical conduits, vents, pipe chases, concrete slabs, skylights on roofs; around ant mounds, garbage cans, and trees; along walls, window sills, sidewalks, and driveways; on ground around home or structure.
- The bait stations can be stuck to a vertical surfaces by removing the easy peel and stick adhesive covering from the bottom of the station.
- Do not spray the bait stations. Avoid placing the bait stations on freshly sprayed surfaces.
- Increased ant activity may be seen near the bait stations immediately after placement for short periods but you can expect to see less activity within three days. After placement, ant trails may be observed between the bait stations and the nests. For best results do not

- interfere with the ants or the stations because ants must carry the bait back to the nest to destroy the queen and colony.
- Inspect all bait stations and replace as needed for continuous control of ants.

STORAGE AND DISPOSAL:

Do not contaminate water, food, or feed by storage and disposal.
STORAGE: Store in a cool dry area out of reach of children.
PESTICIDE DISPOSAL: Wrap bait stations in several layers of newspaper and discard in trash.

IMPORTANT: READ BEFORE USE

Read the entire Directions for Use, Conditions, Disclaimer of Warranties and Limitations of Liability before using this product. If terms are not acceptable, return the unopened product container at once.

By using this product, user or buyer accepts the following Conditions, Disclaimer of Warranties and Limitations of Liability.

CONDITIONS: The directions for use of this product are believed to be adequate and must be followed carefully. However, it is impossible to eliminate all risks associated with the use of this product. Crop injury, ineffectiveness or other unintended consequences may result because of such factors as weather conditions, presence of other materials, or the manner of use or application, all of which are beyond the control of Bayer CropScience LP. All such risks shall be assumed by the user or buyer.

DISCLAIMER OF WARRANTIES: TO THE EXTENT CONSISTENT WITH APPLICABLE LAW, BAYER CROPSCIENCE LP MAKES NO OTHER WARRANTIES, EXPRESS OR IMPLIED, OF MERCHANTABILITY OR OF FITNESS FOR A PARTICULAR PURPOSE OR OTHERWISE, THAT EXTEND BEYOND THE STATEMENTS MADE ON THIS LABEL. No agent of Bayer CropScience LP is authorized to make any warranties beyond those contained herein or to modify the warranties contained herein. TO THE EXTENT CONSISTENT WITH APPLICABLE LAW, BAYER CROPSCIENCE LP DISCLAIMS ANY LIABILITY WHATSOEVER FOR SPECIAL, INCIDENTAL OR CONSEQUENTIAL DAMAGES RESULTING FROM THE USE OR HANDLING OF THIS PRODUCT.

LIMITATIONS OF LIABILITY: TO THE EXTENT CONSISTENT WITH APPLICABLE LAW, THE EXCLUSIVE REMEDY OF THE USER OR BUYER FOR ANY AND ALL LOSSES, INJURIES OR DAMAGES RESULTING FROM THE USE OR HANDLING OF THIS PRODUCT, WHETHER IN CONTRACT, WARRANTY, TORT, NEGLIGENCE, STRICT LIABILITY OR OTHERWISE, SHALL NOT EXCEED THE PURCHASE PRICE PAID, OR AT BAYER CROPSCIENCE LP'S ELECTION, THE REPLACEMENT OF PRODUCT.

Bayer (reg'd), the Bayer Cross (reg'd), Domino Effect[®] and Maxforce[®] are registered trademarks of Bayer.



(01)00785740197165

Bayer

Produced for:
Bayer Environmental Science
A Division of Bayer CropScience LP
2 T. W. Alexander Drive
Research Triangle Park, NC 27709
Product of China



Common Household Ants

Contents:
24 Child-Resistant Bait Stations
Net Weight: **0.05 Oz (1.5 g) per unit**
Total Net Weight: **3.8 Oz (108.0g)**

80194501
80243383B 140312AV1

FIRST AID	
If on skin or clothing:	<ul style="list-style-type: none"> Take off contaminated clothing. Rinse skin immediately with plenty of water for 15-20 minutes. Call a poison control center or doctor for treatment advice.
If in eyes:	<ul style="list-style-type: none"> Hold eye open and rinse slowly and gently with water for 15-20 minutes. Remove contact lenses, if present, after the first 5 minutes, then continue rinsing. Call a poison control center or doctor for treatment advice.

Have the product container or label with you when calling a poison control center or doctor or going for treatment. You may also contact 1-800-334-7577 for emergency medical treatment information.

FIRST AID

FOR USE IN COMMERCIAL, INDUSTRIAL AND RESIDENTIAL AREAS
ACTIVE INGREDIENT: Fipronil*, [5-Amino-1-(2,6-dichloro-4-trifluoromethyl)phenyl]-4-(1, R, S)-(trifluoromethyl) sulfinyl]-1H-pyrazole-3-carbonitrile].....0.01%
Other ingredients:.....99.99%
TOTAL:.....100.00%
 *CAS NO. 120068-37-3
 EPA Reg. No. 432-1256
 EPA Est. No. 071106-GA-003
KEEP OUT OF REACH OF CHILDREN
CAUTION: SEE PRECAUTIONS BELOW
CAUTION



Maxforce[®] FC

SINGLES IN A RESEALABLE BAG

SINGLES IN A RESEALABLE BAG



Maxforce[®]
FC

ANT BAIT STATIONS

FOR USE IN COMMERCIAL, INDUSTRIAL AND RESIDENTIAL AREAS

ACTIVE INGREDIENT: Fipronil*: [5-Amino-1-(2, 6-dichloro-4-trifluoromethyl) phenyl)-4-(1, R, S)-(trifluoromethyl) sulfinyl)-1H-pyrazole-3-carbonitrile].....0.01%

Other Ingredients:99.99%

TOTAL:100.00%

*CAS NO. 120068-37-3

EPA Reg. No. 432-1256

EPA Est. No. 071106-GA-003

KEEP OUT OF REACH OF CHILDREN
CAUTION: SEE PRECAUTIONS BELOW
CAUTION

FIRST AID

If on skin or clothing:	<ul style="list-style-type: none">• Take off contaminated clothing.• Rinse skin immediately with plenty of water for 15-20 minutes.• Call a poison control center or doctor for treatment advice.
If in eyes:	<ul style="list-style-type: none">• Hold eye open and rinse slowly and gently with water for 15-20 minutes.• Remove contact lenses, if present, after the first 5 minutes, then continue rinsing.• Call a poison control center or doctor for treatment advice.

Have the product container or label with you when calling a poison control center or doctor or going for treatment. You may also contact 1-800-334-7577 for emergency medical treatment information.

Contents:

24 Child-Resistant Bait Stations

Net Weight:

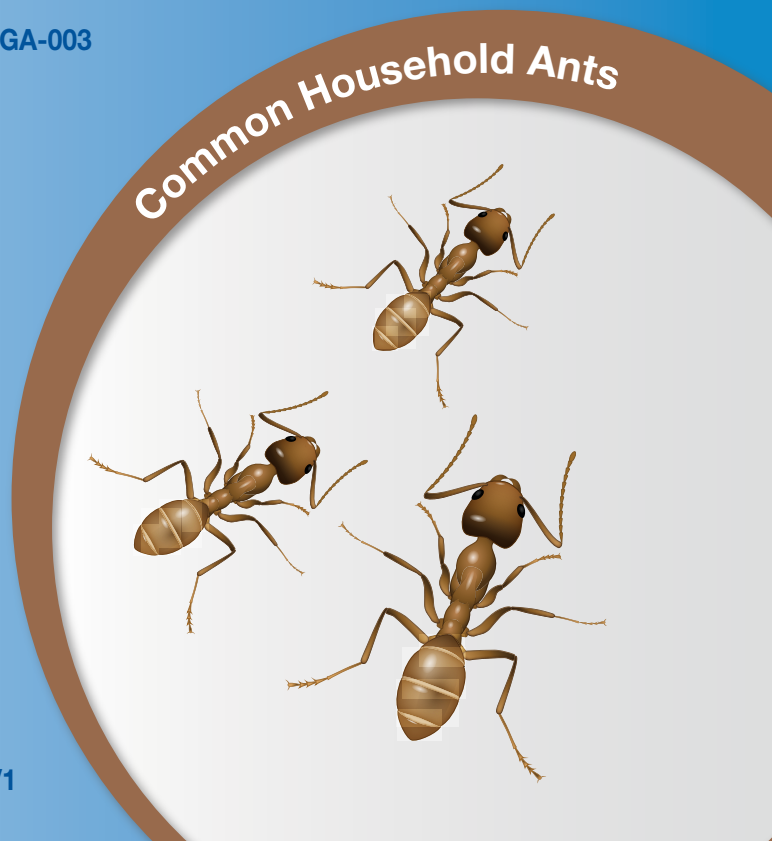
0.05 Oz (1.5 g) per unit

Total Net Weight:

3.8 Oz (108.0g)

80194501

80243383B 140312AV1



TEAR HERE TO OPEN



Maxforce[®]
FC

ANT BAIT STATIONS

PRECAUTIONARY STATEMENTS

HAZARDS TO HUMANS AND DOMESTIC ANIMALS CAUTION

Wash thoroughly with soap and water after handling bait stations.

PRODUCT INFORMATION

MAXFORCE[®] FC Ant Bait Stations contain an attractive bait formulation which kills Pharaoh ants and other common household ants: Argentine Ants, Crazy Ants, Pavement Ants, Cornfield Ants, Odorous House Ants, Acrobat Ants and Thief Ants by contact and ingestion. When properly used, MAXFORCE FC Ant Bait Stations will attract foraging worker ants that feed on the bait, which contains the active ingredient Fipronil. Then, the worker ants will take some of this bait back to the nest, where they will pass it on to destroy the queen and the entire colony. This is called the Maxforce Domino Effect[®].

Do not use residual sprays near the product, as the worker ants must remain alive to carry the bait back to the queen and immature workers. Residual sprays may cause worker ants to spread out and form secondary colonies. MAXFORCE FC Ant Bait Stations works because it is non-repellent and thus will not cause secondary colony formation.

MAXFORCE FC Ant Bait Stations have no insecticide odor, are child-resistant and easy to use. The bait station design allows you to inspect each bait placement and monitor the amount of ant feeding. They may be used for the control of ants in hospitals, nursing homes, day care centers, schools, residential establishments, warehousing and commercial establishments, food service, food manufacturing and food processing facilities, laboratories, computer and electronic equipment facilities, pet shops, zoos, buses, boats, aircraft, and trains.

DIRECTIONS FOR USE

It is a violation of Federal law to use this product in a manner inconsistent with its labeling.

1. Simply place each bait station indoors or outdoors (adjacent to the home or structure) immediately next to ant trails or close to areas where ants are numerous. Nests are usually located in dark, humid and warm areas close to a water and food source. For maximum effectiveness in ant control the bait station should be placed in or near wall voids, electrical outlets (if wiring permits), potted plants, waste-paper baskets, garbage cans, and sinks. Bait stations can be placed in cabinets, next to dishes, near sensitive equipment or in any place specifically listed on this label. In zoos and pet shops, place bait stations out of reach of zoo animals and pets.
2. Indoor Use: For normal infestations, you should use 3 MAXFORCE FC Ant Bait Stations in an average size room. For heavier infestations, you will need additional bait stations in each room. If infestation persists beyond two weeks, replace all bait stations where the bait has been completely consumed and relocate bait stations that show no evidence of ant feeding.
3. Outdoor Use: Bait stations should be placed adjacent to the home or structure near ant activity or anywhere ants may gain access to the home or structure. Application sites include electrical conduits, vents, pipe chases, concrete slabs, skylights on roofs; around ant mounds, garbage cans, and trees; along walls, window sills, sidewalks, and driveways; on ground around home or structure.
4. The bait stations can be stuck to a vertical surfaces by removing the easy peel and stick adhesive covering from the bottom of the station.
5. Do not spray the bait stations. Avoid placing the bait stations on freshly sprayed surfaces.
6. Increased ant activity may be seen near the bait stations immediately after placement for short periods but you can expect to see less activity within three days. After placement, ant trails may be observed between the bait stations and the nests. For best results do not

interfere with the ants or the stations because ants must carry the bait back to the nest to destroy the queen and colony.

7. Inspect all bait stations and replace as needed for continuous control of ants.

STORAGE AND DISPOSAL:

Do not contaminate water, food, or feed by storage and disposal.

STORAGE: Store in a cool dry area out of reach of children.

PESTICIDE DISPOSAL: Wrap bait stations in several layers of newspaper and discard in trash.

IMPORTANT: READ BEFORE USE

Read the entire Directions for Use, Conditions, Disclaimer of Warranties and Limitations of Liability before using this product. If terms are not acceptable, return the unopened product container at once.

By using this product, user or buyer accepts the following Conditions, Disclaimer of Warranties and Limitations of Liability.

CONDITIONS: The directions for use of this product are believed to be adequate and must be followed carefully. However, it is impossible to eliminate all risks associated with the use of this product. Crop injury, ineffectiveness or other unintended consequences may result because of such factors as weather conditions, presence of other materials, or the manner of use or application, all of which are beyond the control of Bayer CropScience LP. All such risks shall be assumed by the user or buyer.

DISCLAIMER OF WARRANTIES: TO THE EXTENT CONSISTENT WITH APPLICABLE LAW, BAYER CROPSCIENCE LP MAKES NO OTHER WARRANTIES, EXPRESS OR IMPLIED, OF MERCHANTABILITY OR OF FITNESS FOR A PARTICULAR PURPOSE OR OTHERWISE, THAT EXTEND BEYOND THE STATEMENTS MADE ON THIS LABEL. No agent of Bayer CropScience LP is authorized to make any warranties beyond those contained herein or to modify the warranties contained herein. TO THE EXTENT CONSISTENT WITH APPLICABLE LAW, BAYER CROPSCIENCE LP DISCLAIMS ANY LIABILITY WHATSOEVER FOR SPECIAL, INCIDENTAL OR CONSEQUENTIAL DAMAGES RESULTING FROM THE USE OR HANDLING OF THIS PRODUCT.

LIMITATIONS OF LIABILITY: TO THE EXTENT CONSISTENT WITH APPLICABLE LAW, THE EXCLUSIVE REMEDY OF THE USER OR BUYER FOR ANY AND ALL LOSSES, INJURIES OR DAMAGES RESULTING FROM THE USE OR HANDLING OF THIS PRODUCT, WHETHER IN CONTRACT, WARRANTY, TORT, NEGLIGENCE, STRICT LIABILITY OR OTHERWISE, SHALL NOT EXCEED THE PURCHASE PRICE PAID, OR AT BAYER CROPSCIENCE LP'S ELECTION, THE REPLACEMENT OF PRODUCT.

Bayer (reg'd), the Bayer Cross (reg'd), Domino Effect[®] and Maxforce[®] are registered trademarks of Bayer.



Produced for:
Bayer Environmental Science
A Division of Bayer CropScience LP
2 T. W. Alexander Drive
Research Triangle Park, NC 27709
Product of China

Bayer